

Directional Control Solenoid Valve KV Series



**KV
Series**

KV Series Solenoid Valve

Thread Size :- 1/8", 1/4", 3/8", 1/2" {Type: 5/2, 5/3}

Operating Voltage:- AC 220V, AC 110V, DC 24V, DC 12V

Features:-

- Sliding column structure,
- Good sealing and sensitive response
- With Manual Lever ,easy to install and test
- Variety of standard voltages are available
valve group can be integrated with the base
to save installation space

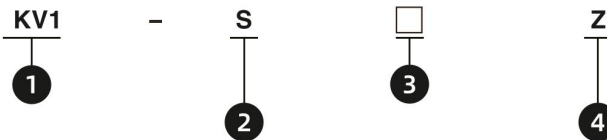
Functional Replacement of 4V100/200/300/400 Series



**KV Series
Solenoid
Valve**



How To Order



1. Model Series

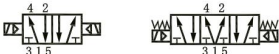
- 1 : KV1 (Port Size:- 1/8")
- 2 : KV2 (Port Size:- 1/4")
- 3 : KV3 (Port Size:- 3/8")
- 4 : KV4 (Port Size:- 1/2")

2. Switching Mode

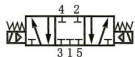
S: 5/2 Single Coil E: 5/3 Double coil center exhaust type



D: 5/2 Double Coil P: 5/3 Double coil center pressure type



C: 5/3 Double coil center close type



3. Thread type

Blank: G
R: Rc
N: NPT

4. Voltage Type

X : AC 220V
W : AC 110V
Z : DC 24V
Y : DC 12V

Order Code for Manifold

Series	Model
KV1	KV1M-□*V
KV2	KV2M-□*V
KV3	KV3M-□*V
KV4	KV4M-□*V

*□ - Number of Valve Mountings available upto 16 Valve

Order Code for Manifold Blanking Plate

Series	Model
KV1M	BKV1
KV2M	BKV2
KV3M	BKV3
KV4M	BKV4

Order Code for Seperate Coil

Series	Model
KV1	KV1L-□*
KV2	KV2L-□*
KV3	KV2L-□*
KV4	KV2L-□*

□*: Voltage Type
X : AC 220V
W : AC 110V
Z : DC 24V
Y : DC 12V

Order Code for Seperate Connector

Series	Model
KV1	KV1R-□*
KV2	KV2R-□*
KV3	KV2R-□*
KV4	KV2R-□*

□*: Voltage Type
AC : For AC Supply
DC : For DC Supply

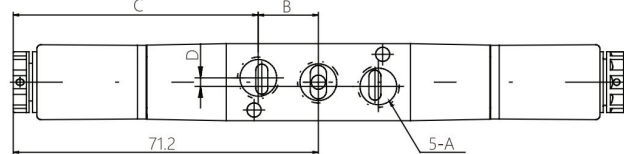
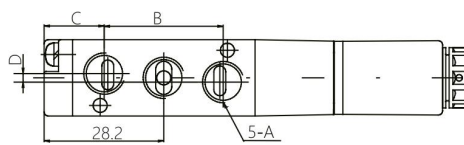
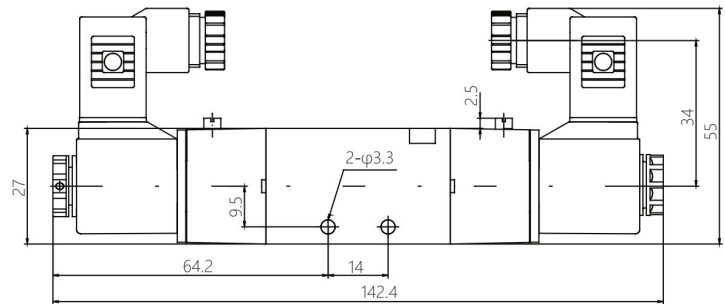
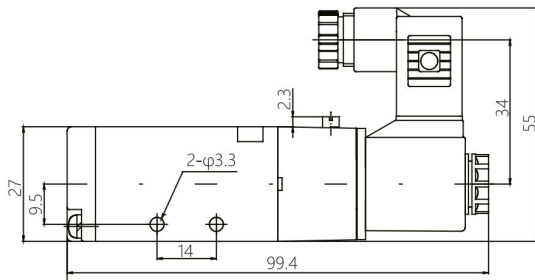
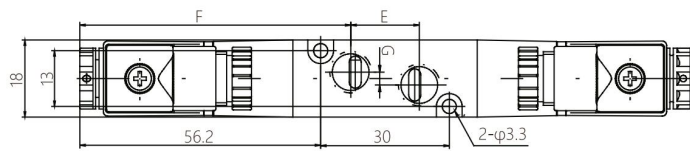
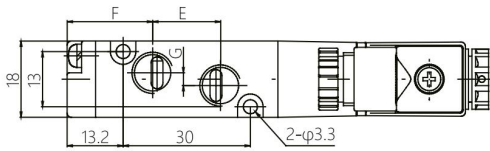
* Dimension of Coil and Connector for KV2, KV3, KV4 are same

SPECIFICATION

KV Series, 5 Port Solenoid Valve					
Item No.		KV1	KV2	KV3	KV4
Working Pressure		0.15 -0.8 MPa			
Working Medium		Compressed Air (filtered by 40μm filter screen)			
Ambient Temp. °C		-10~60 (Non-Freezing)			
Connection Port		Input=Output=Exhaust=1/8	Input=Output=1/4	Input=Output=3/8	Input=Output=1/2
			Exhaust=1/8	Exhaust=1/4	Exhaust=3/8
Working Type		Pilot type			
Max. Pressure MPa		1.2			
Max. Frequency Hz	Two Position Five Way	5	5	4	3
	Two Position Five Way	3			
Effective Cross-Sectional Area mm ²	Three Position Five Way	12	16	30	50
	Three Position Five Way	9	12	18	42
Terminal		DIN type			
Coil Rated Voltage V	DC	12 / 24			
	AC	110 / 220			
Voltage Tolerance		DC ± 10% AC± 15%			
Power Consumption W/VA	Coil/ Voltage	DC12	DC24	AC110	AC220
	KV1 Coil	2.8	2.8	3.0 / 5.0	
	KV2 Coil*	4.8	4.8	3.5 / 5.5	
Protection Class		IP65			

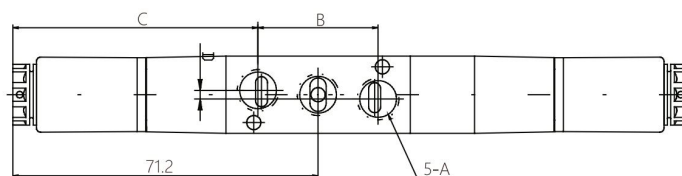
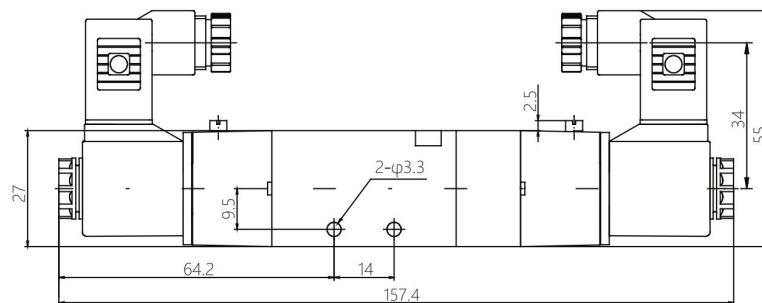
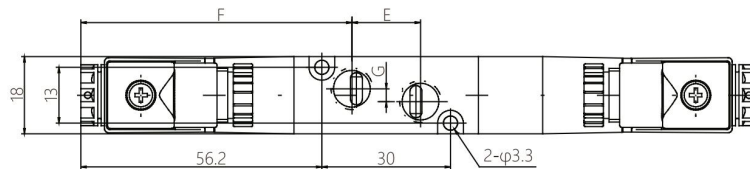
* Coil and Connector for KV2, KV3, KV4 are same

KV1 Dimensional Drawings



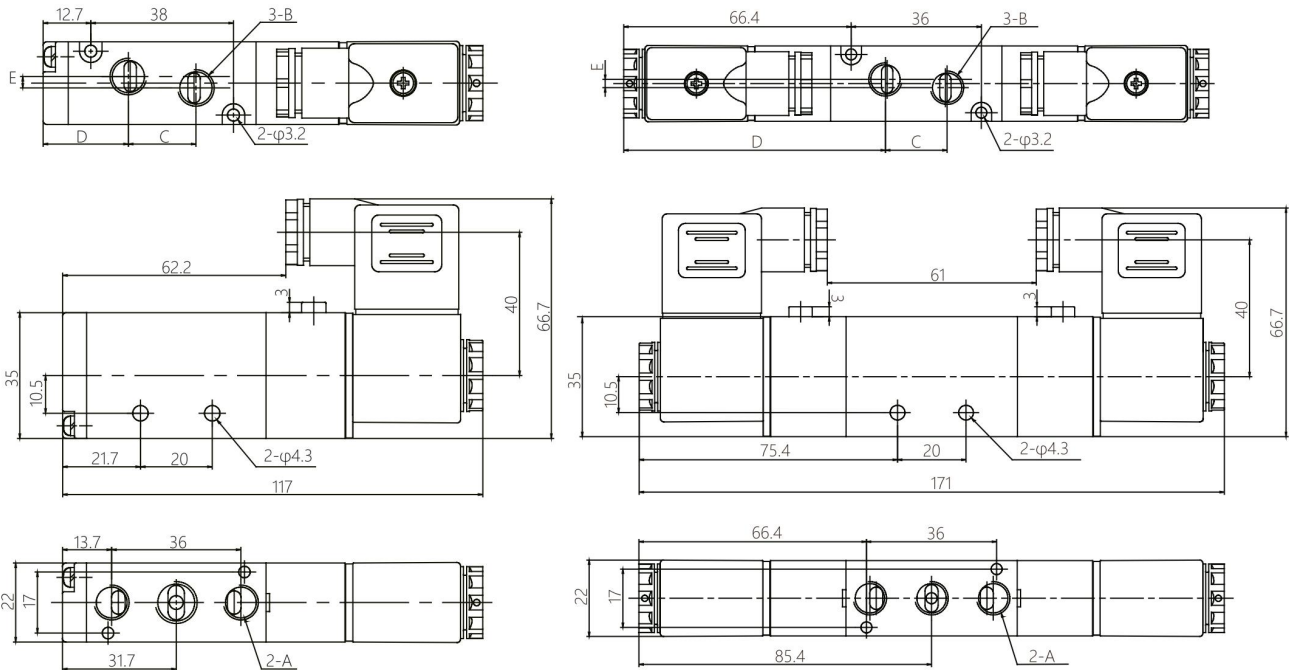
Model	A	B	C	D	E	F	G
KV1-S	G1/8	28	14.2	1	16	20.2	3

Model	A	B	C	D	E	F	G
KV1-D	G1/8	28	57.2	1	16	63.2	3



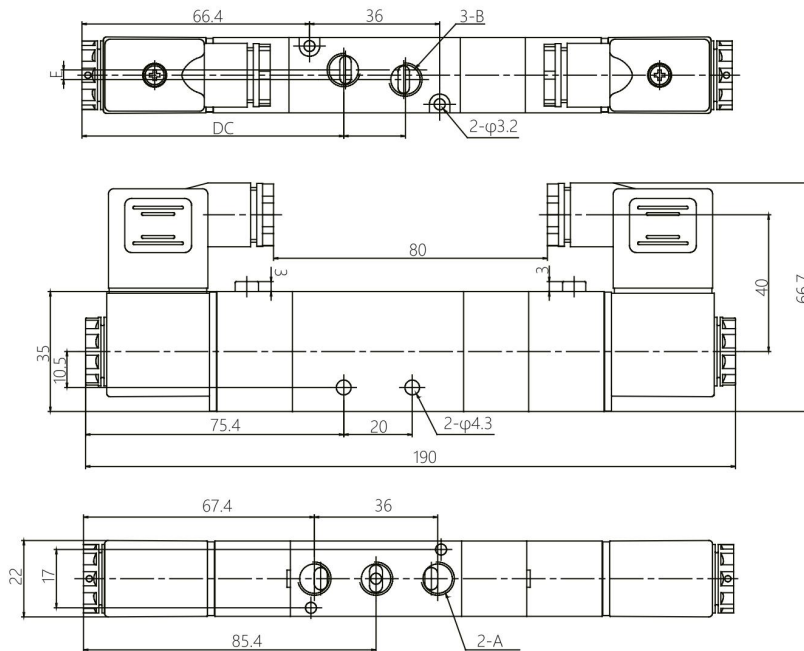
Model	A	B	C	D	E	F	G
KV1-C/E/P	G1/8	28	57.2	1	16	63.2	3

KV2 Dimensional Drawings



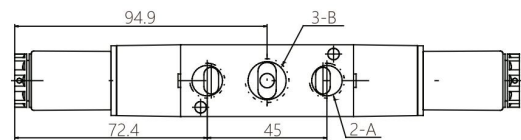
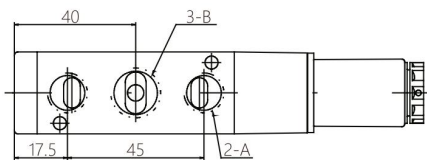
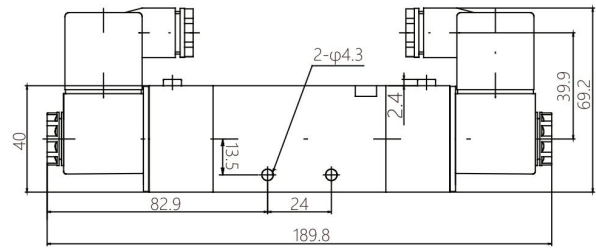
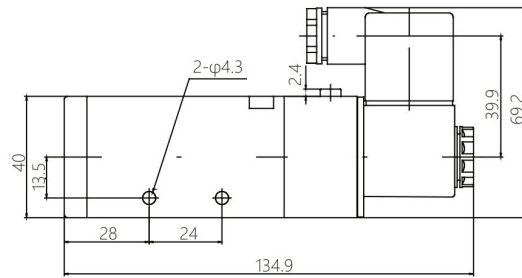
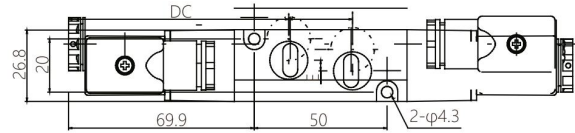
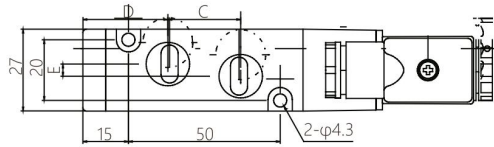
Model	A	B	C	D	E
KV2-S	G1/8	G1/4	21	21.2	3

Model	A	B	C	D	E
KV2-D	G1/8	G1/4	21	74.9	3



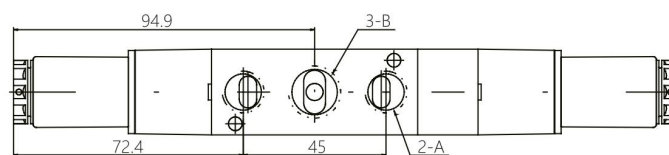
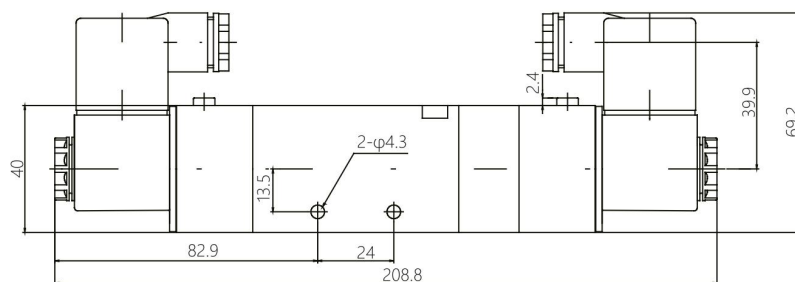
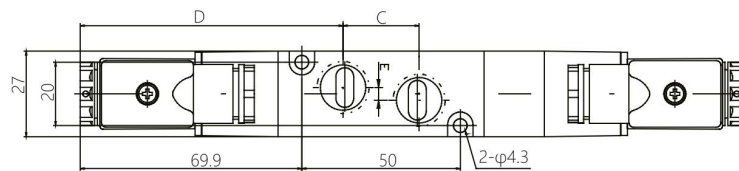
Model	A	B	C	D	E
KV2-C/E/P	G1/8	G1/4	21	74.9	3

KV3 Dimensional Drawings



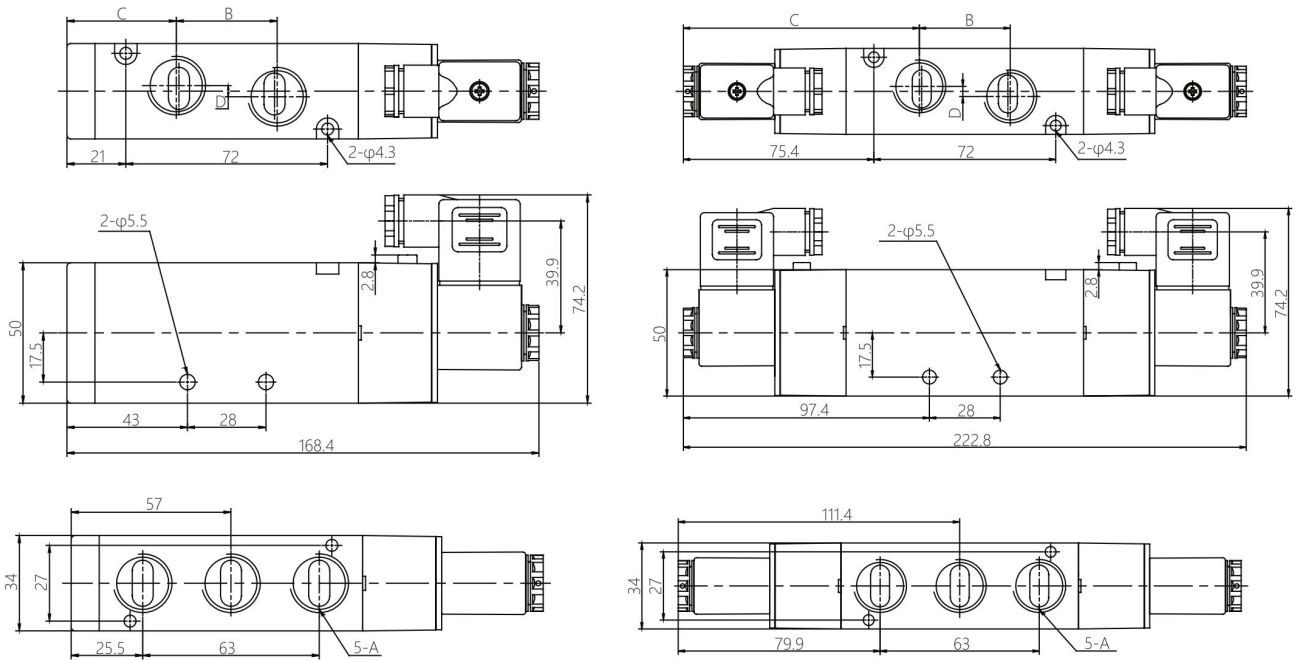
Model	A	B	C	D	E
KV3-S	G1/4	G3/8	24	28	4

Model	A	B	C	D	E
KV3-D	G1/4	G3/8	24	82.9	4



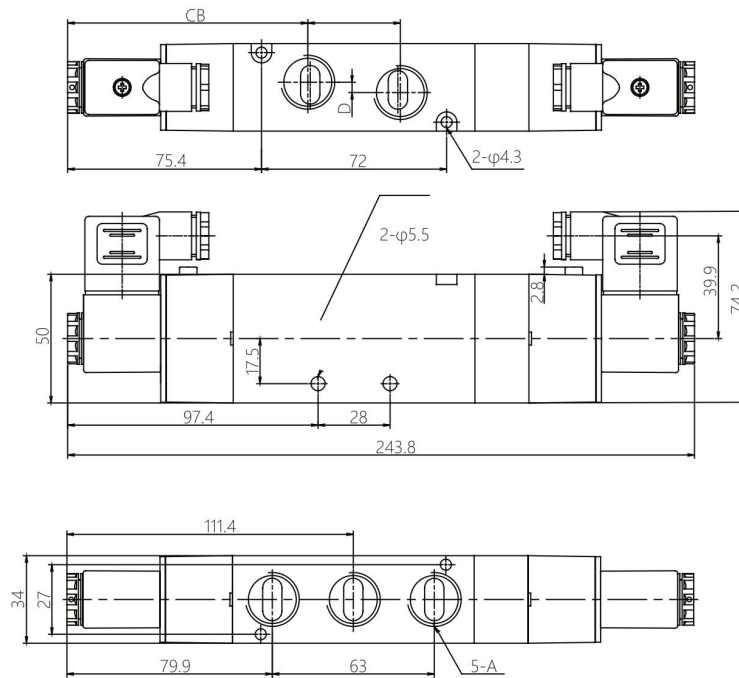
Model	A	B	C	D	E
KV3-C/E/P	G1/4	G3/8	24	82.9	4

KV4 Dimensional Drawings



Model	A	B	C	D
KV4-S	G1/2	36	39	4

Model	A	B	C	D
KV4-D	G1/2	36	93.4	4

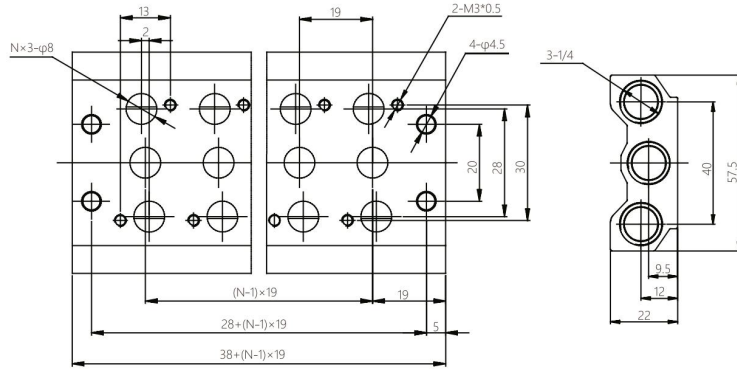


Model	A	B	C	D
KV4-C/E/P	G1/2	36	93.4	4

Manifold Dimensional Drawings

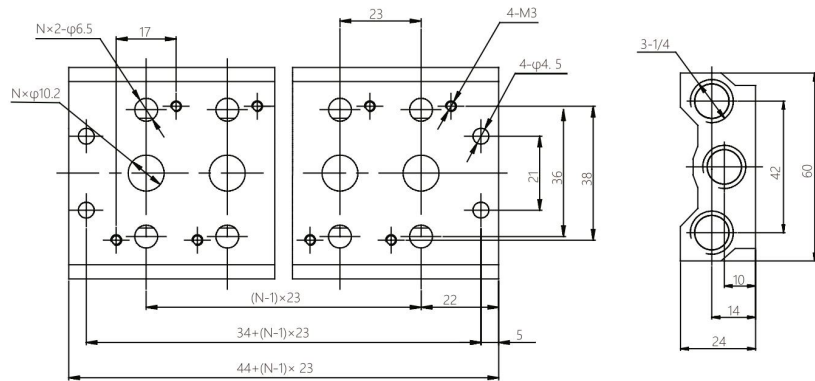
KV1M-□*V

□ - Number of Valve Mountings
available upto 12 Valve



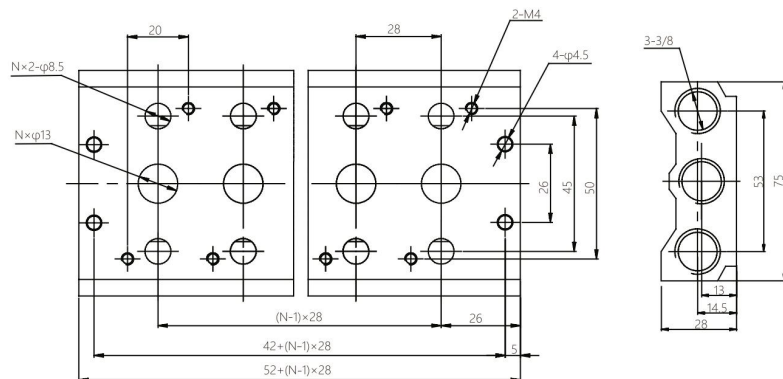
KV2M-□*V

□ - Number of Valve Mountings
available upto 12 Valve



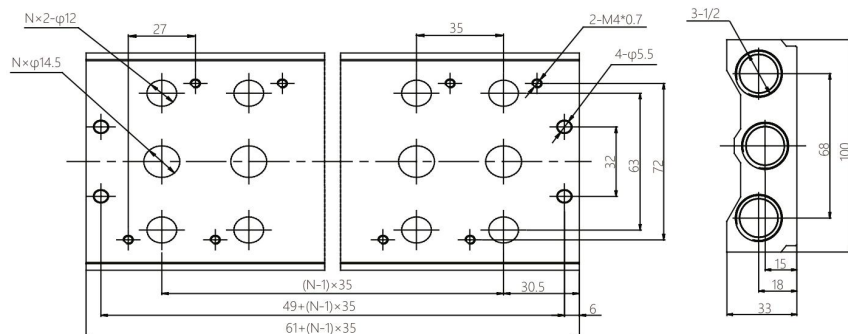
KV3M-□*V

□ - Number of Valve Mountings
available upto 12 Valve



KV4M-□*V

□ - Number of Valve Mountings
available upto 12 Valve





Contact us for more details

+91 9053-888-011

+91 9053-888-013

www.katixpneumatic.com

KATIX[®]

KATIX PNEUMATIC INDIA PVT. LTD.

Plot No.- 198, Sector - 9, HSIIDC
IMT Bawal, Haryana - 123501, India

T: +91 9053-888-011,+91 9053-888-013

E: info@katix.in

GLOBAL SALES NETWORK

North India: sales1@katix.in

East India: sales2@katix.in

South India: sales3@katix.in

West India: sales4@katix.in