

M Series Miniature Fitting



M Series

Miniature Fitting

Applicable Tubing : $\phi 4$, $\phi 6$

Connection Thread : M3, M5

Specifications

Applicable tubing material		Soft nylon	Polyurethane
Applicable tubing O.D. / I.D.	M3	$\phi 4 / \phi 2.5$	$\phi 4 / \phi 2.5$
	M5	$\phi 4 / \phi 2.5$ $\phi 6 / \phi 4$	$\phi 4 / \phi 2.5$ $\phi 6 / \phi 4$
Fluid		Air, N ₂ , Water ^(5, 6, 7)	
Max. operating pressure (at 20°C)		1 MPa	0.8 MPa
Ambient and fluid temperature		-5 to 60°C, Water: 0 to 40°C (No freezing)	
Connection size		M3, M5	M5
Thread		JIS B0205, Class 2 (Metric fine thread) JIS B0203 (Taper thread for piping)	

Compact piping space

Hose nipple tubing connection/disconnection is simple while keeping a large retaining force.

Line up various types

For air connection in confined areas.

Accepts many types of plastic tubing

Hose nipple and hose elbow accepts soft nylon, and polyurethane tubing.

Principal Parts Material

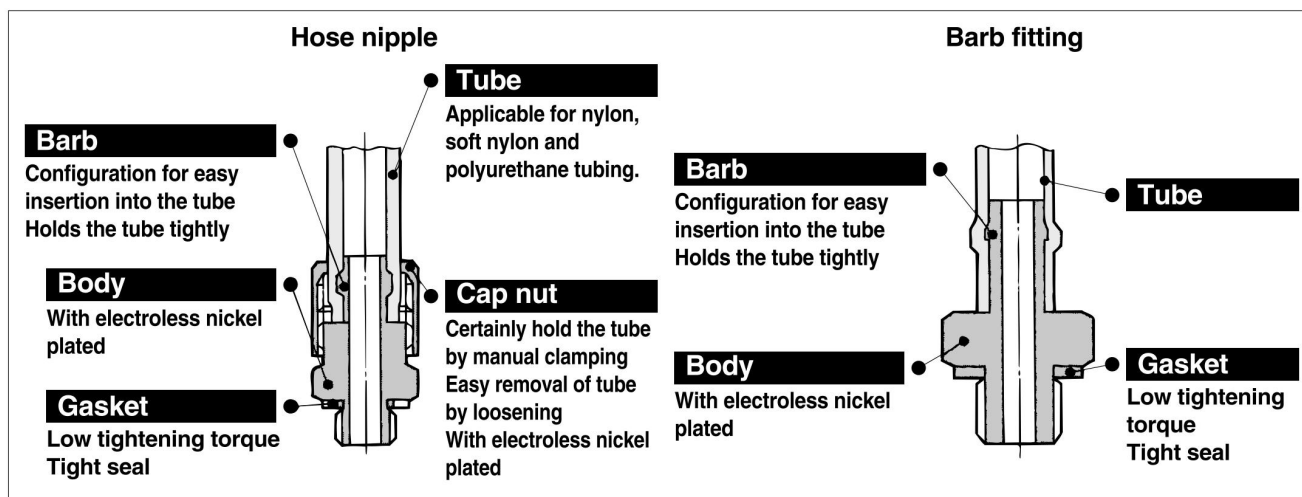
Material	Body	C3604 (Electroless nickel plate) (Nipple M-3N, M-5N: Stainless steel 303)
	Gasket	Nylon 66: GF30%, Stainless steel 304: NBR

* Body of M-5E, M-5ER, M-5M is not surface-treated.

Fitting Markings for Applicable Tubing Material (Barb fitting, Barb elbow, Barb elbow (H))

Tubing material determines the compatible fittings. (Refer to the table below.)



Connection	Tubing	Fitting marking for applicable tubing material	
		Barb fittings	Barb elbow
M3	Soft nylon tubing Polyurethane tubing		—
M5	Soft nylon tubing Polyurethane tubing		







M Series Miniature Fitting

KATIX

M3 Series

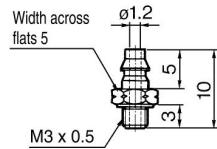
Series	Model	Description	Application	Note
M3	M-3AU-4	Barb fitting for soft tubing 	For soft nylon and polyurethane tubing	ø4/2.5 x M3
	M-3ALU-4	Barb elbow for soft tubing 	Body rotates at 360° around the stud axis For soft nylon and polyurethane tubing	ø4/2.5 x M3

M5 Series

Series	Model	Description	Application	Note
M5	M-5AU-4	Barb fitting for soft tubing 	For soft nylon and polyurethane tubing	ø4/2.5 x M5 ø6/4 x M5
	M-5AU-6			
M5	M-5ALU-4	Barb elbow for soft tubing 	Body rotates at 360° around the stud axis For soft nylon and polyurethane tubing	ø4/2.5 x M5 ø6/4 x M5
	M-5ALU-6			
M5	M-5H-4	Hose nipple 	For nylon, soft nylon and polyurethane tubing	ø4/2.5 x M5 ø6/4 x M5
	M-5H-6			
M5	M-5HL-4	Hose elbow 	<ul style="list-style-type: none"> For nylon, soft nylon and polyurethane tubing Body rotates at 360° around the stud axis 	ø4/2.5 x M5 ø6/4 x M5
	M-5HL-6			

M3 Series

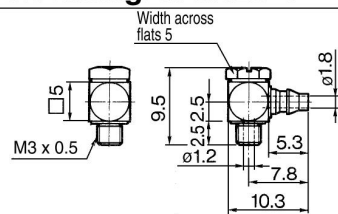
Barb Fitting for Soft Tubing: M-3AU-4



Effective area: 0.9 mm²

Weight: 0.7 g

Barb Elbow for Soft Tubing: M-3ALU-4



Effective area: 0.6 mm²

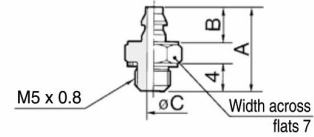
Weight: 0.9 g

M5 Series

Barb Fitting for Soft Tubing: M-5AU-3/-4/-6



Model	A	B	øC	Effective area (mm ²)	Weight (g)
M-5AU-4	12	5	1.8	2.1	1.6
M-5AU-6	14	7	2.5	4.0	1.8

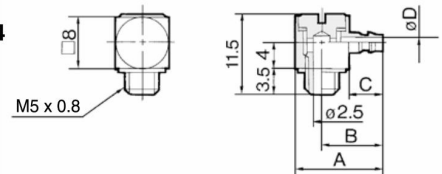


Barb Elbow for Soft Tubing: M-5ALU-3/-4/-6

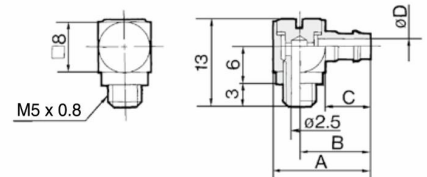


Model	A	B	C	øD	Effective area (mm ²)	Weight (g)
M-5ALU-4	13.5	9.5	5	1.8	1.4	4.1
M-5ALU-6	15.5	11.5	7	2.5	2.4	4.5

M-5ALU-4



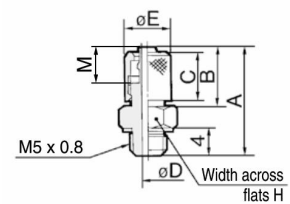
M-5ALU-6



Hose Nipple: M-5H-4/-6



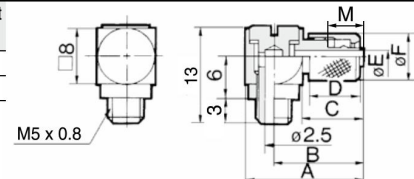
Model	A	B	C	øD	øE	H	M	Effective area (mm ²)	Weight (g)
M-5H-4	15.5	8.5	7	1.8	6.5	7	5	2.1	2.7
M-5H-6	16.5	9.5	8	2.5	8.5	8	6	4.0	3.9



Hose Elbow: M-5HL-4/-6



Model	A	B	C	D	øE	øF	M	Effective area (mm ²)	Weight (g)
M-5HL-4	16.5	12.5	8.5	7	1.8	6.5	5	1.4	4.4
M-5HL-6	17.5	13.5	9.5	8	2.5	8.5	6	2.4	5.2





Contact us for more details

+91 9053-888-011

www.katixpneumatic.com

KATIX[®]

KATIX PNEUMATIC INDIA PVT. LTD.

Plot No.- 198, Sector - 9, HSIIDC
IMT Bawal, Haryana - 123501, India

T: +91 9053-888-011

E: info@katix.in